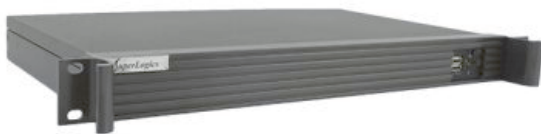


1U Rack Mount Industrial PC Rackmount

Configuration Number: BASE CONFIG
SL-1U-LLH310TN-GC



Type:

- 1U Rack Mount Industrial PC
- Depth: 11", Max Card Depth: 6.5 inches"

Motherboard:

- Featuring Intel H310 Chipset and 8th and 9th Gen Core i7/i5/i3 (LGA1151) processor
- **Long Production Cycle Motherboard (Through Q1 2025)**
- **LAN:** 2x Ports (1GbE + 1GbE)
- **Video:** HDMI + Displayport + Optional VGA
- **Audio:** Realtek ALC887 codec
- **Ports:**
 - 4x USB 2.0 Ports (2 Front, 2 Rear)
 - 4x USB 3.2 Gen 1 Ports (2 Rear, 2 Internal Headers)
 - 4x COM Ports (2 RS232 Internal Headers, 2 RS232/422/485 Internal Headers)
- See specifications for more ports
- **Operating Temperature:** 0°C to 50°C (32°F to 122°F)

Configuration summary:

- **Processor:** G4900 - 3.1GHz Intel Celeron CPU - Dual Core, 2MB Cache, UHD Graphics 610 (54W) (ERM) - or Better
- **Memory:** 8GB DDR4 2666MHz SODIMM RAM
- **Hard Drive:** 250GB NVMe SSD M.2 2.9GB/1.3GB - Samsung 980
- **Operating System:** Not Included -
- **Warranty:** One-Year Depot Warranty

Technical Specifications

MotherBoard Specifications:

Motherboard Model

- Motherboard Type: MiniITX
- Long Production Cycle
- Long Life: YES
- EOL Date: Q1 2025

Supported CPU

- Number of Processors: 1
- Processor Type: 8th and 9th Gen Core i7/i5/i3 (LGA1151)

Chipset

- Chipset: Intel H310 Chipset

Memory

- Memory Type: SO DIMM DDR4 2133MHz
- Memory Type: Non-ECC
- DIMMS: 2
- Maximum Memory: 32GB

On Board Audio

- Audio Type: Realtek ALC887 codec

On Board Video

- Video Chipset: Supported by CPU - depends on CPU selected
- Video on IO: HDMI + Displayport + Optional VGA
- Display Port Out: 1
- HDMI Out: 1

LAN

- LAN Ports: 2
- LAN Type: 1GbE + 1GbE
- LAN Chipset: Intel GbE LAN chip
- Second LAN Chipset: Intel GbE LAN chip
- Wireless LAN: No Integrated WLAN

Drive Interface

- SATA III Ports (6GB): 2

Mini PCIe

- mini PCIe
- mSATA
- half and/or full size mini PCIe card: full size

M.2 Slot Specs

- Total M.2 NVMe SSD Slots: 1

Chassis Specifications:

General

- Form Factor: 1U Rackmount
- Color: Black
- Material: Metal/Steel
- Material Thickness: 1mm
- Motherboard Compatibility: Mini ITX
- Slide Rails: Optional

Expansion

- Full Height Slots: 1
- Max Card Depth: 6.5 inches"
- Internal 2.5" Bays: 2

Front Ports

- USB 2.0 Ports (Front): 2

Cooling System

- Maximum Fan Count: 2
- Included Fans: 2

Physical

- Depth: 11"
- Depth (Inches): 11
- Width: 19.10"
- Height: 1.75"
- Shipping Box - Depth: 22"
- Shipping Box - Width: 15"
- Shipping Box - Height: 5"
- Shipping Weight: 15lbs

Other Features

- Chassis Warranty: 1 Year

- M.2 Slot #1 Specs
- M.2 SATA SSD
- 2242 - 22 mm x 42 mm.
- 2260 - 22 mm x 60 mm.
- 2280 - 22 mm x 80 mm.

Rear IO

- USB 2.0 Ports (on IO): 2
- USB 3.2 Gen 1 Type A Ports (on IO): 2
- Audio on IO

Headers

- USB 2.0 Ports (on Headers): 2
- USB 3.2 Gen 1 Ports (on Headers): 2
- Serial (via Headers): 2
- Serial 232/422/485 Ports: 2
- FAN Connectors: 2
- Audio on Headers
- Chassis Intrusion
- DC Power: Supports 12V/19V/24V power adapter of up to 150w

Environmental

- Operating Temperature: 0°C to 50°C (32°F to 122°F)
- High Humidity: 90%
- Low Humidity: 5%

Operating System Support

- Windows 10 Home (64 Bit)
- Windows 10 Pro (64-Bit)
- SL-Windows 11PRO to 10PRO 64bit
- Windows 10 IoT Value
- Windows 10 IoT Ent
- Windows 10 IoT Value 2019 LTSC
- Windows 10 IoT Ent 2019 LTSC
- Windows 10 IoT 2021 LTSC Value
- Windows 10 IoT 2021 LTSC High End
- Windows 11 Home (64 Bit)
- Windows 11 Pro (64 Bit)
- Windows 11 IoT 2024 LTSC Value
- Windows 11 IoT 2024 LTSC High End
- LINUX Ubuntu Desktop

Compliance of Component

- UL
- CE
- RoHS
- FCC

Other Features

- Other Features:
 - 1 x PCI Express x4 slot

(The PCI Express x4 slot conforms to PCI Express 3.0 standard.)

- 1 x M.2 Socket 1 connector for an Intel® CNVi or a PCIe wireless module (CNVi)
 - 1x M.2 connector (Socket 3, M key, type 2242/2260/2280 SATA and PCIe x2 SSD support)
 - 1 x full size Mini PCIe connector (MSATA_PCIE)
 - * The MSATA_PCIE connector can also be used as an MSATA connector.
- (The Mini PCIe connector conforms to PCI Express 2.0 standard.)
- Motherboard Warranty: 1 Year



www.superlogics.com
Phone: 1-508-650-9500

sales@superlogics.com
Fax: 1-508-650-9525