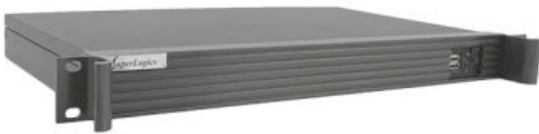


# 1U Rack Mount Industrial PC Rackmount

Configuration Number: BASE CONFIG  
SL-1U-J5040-GC



## Type:

- 1U Rack Mount Industrial PC
- Depth: 11", Max Card Depth: 6.5 inches"

## Motherboard:

- Featuring Intel Pentium SoC and Intel Pentium Quad-Core Processor J5040 (up to 3.2 GHz)
- **LAN:** 1x Ports (1GbE (10/100/1000))
- **Video:** VGA + DVI-D + HDMI
- **Audio:** Realtek ALC892
- **Ports:**
  - 5x USB 2.0 Ports ( 2 Front, 2 Rear, 1 Internal Headers )
  - 4x USB 3.2 Gen 1 Ports ( 2 Rear, 2 Internal Headers )
  - 1x COM Port (RS232 Internal Headers)

See specifications for more ports
- **Operating Temperature:** 0°C to 50°C (32°F to 122°F)

## Configuration summary:

- **Memory:** 8GB DDR4 2666MHz SODIMM RAM
- **Hard Drive:** 250GB SSD SATA 6.0Gb/s 560/530MB/s 2.5" - Samsung 870 EVO
- **Power Supply:** 150W 1U Flex ATX Power Supply
- **Operating System:** Not Included -
- **Warranty:** One-Year Depot Warranty

# Technical Specifications

## MotherBoard Specifications:

### Motherboard Model

- Motherboard Type: MiniITX

### Supported CPU

- Number of Processors: 1
- Processor Type: Embedded CPUs (ultra-low power, soldered down)
- Embedded CPU: Intel Pentium Quad-Core Processor J5040 (up to 3.2 GHz)

### Chipset

- Chipset: Intel Pentium SoC

### Memory

- Memory Type: DDR4 2400MHz
- Memory Type: Non-ECC
- DIMMS: 2
- Maximum Memory: 8GB

### On Board Audio

- Audio Type: Realtek ALC892

### On Board Video

- Video Chipset: Supported by CPU - depends on CPU selected
- Video on IO: VGA + DVI-D + HDMI
- VGA Port Out: 1
- DVI-D Out: 1
- HDMI Out: 1

### LAN

- LAN Ports: 1
- LAN Type: 1GbE (10/100/1000)
- LAN Chipset: Realtek RTL8111H
- Wireless LAN: No Integrated WLAN

### Drive Interface

- SATA III Ports (6GB): 4

### M.2 Slot Specs

- M.2 Slot #1 Specs
- PCIe Signal
- 2230 - 22 mm x 30 mm.

### Rear IO

- PS/2 Mouse on IO
- PS/2 Keyboard on IO
- USB 2.0 Ports (on IO): 2

## Chassis Specifications:

### General

- Form Factor: 1U Rackmount
- Color: Black
- Material: Metal/Steel
- Material Thickness: 1mm
- Motherboard Compatibility: Mini ITX
- Slide Rails: Optional

### Expansion

- Full Height Slots: 1
- Max Card Depth: 6.5 inches"
- Internal 2.5" Bays: 2

### Front Ports

- USB 2.0 Ports (Front): 2

### Cooling System

- Maximum Fan Count: 2
- Included Fans: 2

### Physical

- Depth: 11"
- Depth (Inches): 11
- Width: 19.10"
- Height: 1.75"
- Shipping Box - Depth: 22"
- Shipping Box - Width: 15"
- Shipping Box - Height: 5"
- Shipping Weight: 15lbs

### Other Features

- Chassis Warranty: 1 Year

- USB 3.2 Gen 1 Type A Ports (on IO): 2
- SPDIF Connector: 1
- Audio on IO

#### **Headers**

- USB 2.0 Ports (on Headers): 3
- USB 3.2 Gen 1 Ports (on Headers): 2
- Serial (via Headers): 1
- FAN Connectors: 2
- Audio on Headers

#### **Environmental**

- Operating Temperature: 0°C to 50°C (32°F to 122°F )
- High Humidity: 90%
- Low Humidity: 5%

#### **Operating System Support**

- Windows 10 Home (64 Bit)
- Windows 10 Pro (64-Bit)
- SL-Windows 11PRO to 10PRO 64bit
- Windows 10 IoT Entry 2019 LTSC
- Windows 10 IoT 2021 LTSC Entry
- Windows 11 Home (64 Bit)
- Windows 11 Pro (64 Bit)
- Windows 11 IoT 2024 LTSC Entry
- LINUX Ubuntu Desktop

#### **Compliance of Component**

- CE
- FCC

#### **Other Features**

- Other Features:
  - \*USB3\_0\_1 is shared with USB\_0\_1.
- Motherboard Warranty: 1 Year



www.superlogics.com  
Phone: 1-508-650-9500

sales@superlogics.com  
Fax: 1-508-650-9525