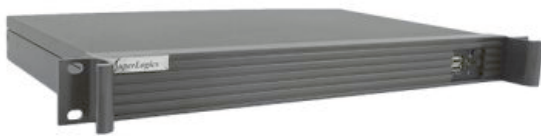


# 1U Rack Mount Industrial PC Rackmount

Configuration Number: BASE CONFIG  
SL-1U-N3160J-GC-NF



## TPM Support: 2.0 Module Included

### Type:

- 1U Rack Mount Industrial PC
- Depth: 11", Max Card Depth: 8.5"

### Motherboard:

- Featuring Intel Celeron SoC and Intel Celeron N3160 SoC, 1.60GHz - 2.24GHz Burst, Quad-Core, 6W TDP/4W SDP, with AES-NI support
- **Long Production Cycle Motherboard (Through Q1 2031)**
- **LAN:** 2x Ports (1GbE + 1GbE)
- **Video:** VGA + HDMI
- **Audio:** Realtek ALC662 HD Audio
- **Ports:**
  - 4x USB 2.0 Ports ( 2 Front, 1 Rear, 1 Internal Headers )
  - 3x USB 3.2 Gen 1 Ports ( 3 Rear )
  - 6x COM Ports (1 RS232 Rear, 4 RS232 Internal Headers, 1 RS232/422/485 Rear)
  - 1x Parallel Port (Rear)
  - See specifications for more ports
- **Operating Temperature:** 0°C to 60°C (32°F to 140°F)

### Configuration summary:

- **Memory:** 4GB DDR3L 1600MHz SODIMM RAM 1.35V
- **Hard Drive:** 250GB SSD SATA 6.0Gb/s 560/530MB/s 2.5" - Samsung 870 EVO
- **Power Supply:** 90w output, 12v input DC-DC Power Supply - AC Adapter Included
- **Operating System:** Not Included -

- **Warranty:** One-Year Depot Warranty

# Technical Specifications

## MotherBoard Specifications:

### Motherboard Model

- Motherboard Type: MiniITX
- Fanless
- Long Production Cycle
- Long Life: YES
- EOL Date: Q1 2031

### Supported CPU

- Number of Processors: 1
- Processor Type: Embedded CPUs (ultra-low power, soldered down)
- Embedded CPU: Intel Celeron N3160 SoC, 1.60GHz – 2.24GHz Burst, Quad-Core, 6W TDP/4W SDP, with AES-NI support

### Chipset

- Chipset: Intel Celeron SoC

### Memory

- Memory Type: DDR3 1600MHz
- Memory Type: Non-ECC
- DIMMS: 2
- Maximum Memory: 8GB

### On Board Audio

- Audio Type: Realtek ALC662 HD Audio

### On Board Video

- Video Chipset: Supported by CPU - see Embedded CPU Information
- Video on IO: VGA + HDMI
- VGA Port Out: 1
- HDMI Out: 1

### LAN

- LAN Ports: 2
- LAN Type: 1GbE + 1GbE
- LAN Chipset: Realtek RTL8111H
- Second LAN Chipset: Realtek RTL8111H
- Wireless LAN: No Integrated WLAN

### Drive Interface

- SATA III Ports (6GB): 1

## Chassis Specifications:

### General

- Form Factor: 1U Rackmount
- Color: Black
- Material: Metal/Steel
- Material Thickness: 1mm
- Motherboard Compatibility: Mini ITX
- Slide Rails: Optional

### Expansion

- Full Height Slots: 1
- Max Card Depth: 8.5"
- Internal 2.5" Bays: 2

### Front Ports

- USB 2.0 Ports (Front): 2

### Physical

- Depth: 11"
- Depth (Inches): 11
- Width: 19.10"
- Height: 1.75"
- Shipping Box - Depth: 22"
- Shipping Box - Width: 15"
- Shipping Box - Height: 5"
- Shipping Weight: 15lbs

### Other Features

- Chassis Warranty: 1 Year

### Power

- Built-in Chassis Power Supply: 60W AC/DC Power Adapter Included

### **Mini PCIe**

- mini PCIe
- USB and PCIe signals (Internal)
- half and/or full size mini PCIe card: full size
- SIM Card Slot On Motherboard: SIM

### **M.2 Slot Specs**

- M.2 Slot #1 Specs
- PCIe Signal
- 2242 - 22 mm x 42 mm.
- 2260 - 22 mm x 60 mm.

### **Rear IO**

- USB 2.0 Ports (on IO): 1
- USB 3.2 Gen 1 Type A Ports (on IO): 3
- Serial (Rear IO): 1
- Serial 232/422/485 Ports: 1
- Parallel Ports: 1
- Audio on IO

### **Headers**

- USB 2.0 Ports (on Headers): 3
- Serial (via Headers): 4
- FAN Connectors: 2
- Audio on Headers
- LVDS
- PS/2 Combo (Mouse/Keyboard) on Headers
- TPM Support: 2.0 Module Included

### **Management Features**

- Watch Dog

### **Environmental**

- Operating Temperature: 0°C to 60°C (32°F to 140°F )
- High Humidity: 90%
- Low Humidity: 5%

### **Operating System Support**

- Windows 7 Ultimate (64-bit)
- Windows 7 Pro (32-bit)
- Windows 7 Pro (64-bit): Partly
- Windows 7 Pro (FES) 32-Bit
- Windows 7 Pro (FES) 64-Bit
- Windows 7 PRO (FES) DGS 32-BIT
- Windows 7 PRO (FES) DGS 64-BIT
- SL-Windows 10PRO to 7PRO 32-bit
- SL-Windows 10PRO to 7PRO 64-bit
- Windows Embedded 7 (32-Bit)
- Windows Embedded 7 (64-Bit)
- Windows 8.1 (32-bit)
- Windows 8.1 (64-bit)

- Windows 8.1 Pro (32-bit)
- Windows 8.1 Pro (64-bit)
- Windows Embedded 8 (32-bit)
- Windows Embedded 8 (64-bit)
- Windows 10 Home (32 Bit)
- Windows 10 Home (64 Bit)
- Windows 10 Pro (32 Bit)
- Windows 10 Pro (64-Bit)
- Windows 10 Pro WS (64-Bit)
- SL-Windows 11PRO to 10PRO 32bit
- SL-Windows 11PRO to 10PRO 64bit
- Windows 10 IoT Entry 32-bit
- Windows 10 IoT Entry
- Windows 10 IoT Entry 32-bit 2019 LTSC
- Windows 10 IoT Entry 2019 LTSC
- Windows 10 IoT 2021 LTSC Entry
- Windows Server 2012
- LINUX Ubuntu Desktop
- Ubuntu Server Edition

#### **Compliance of Component**

- CE
- RoHS
- FCC

#### **Other Features**

- Motherboard Warranty: 1 Year



[www.superlogics.com](http://www.superlogics.com)  
Phone: 1-508-650-9500

[sales@superlogics.com](mailto:sales@superlogics.com)  
Fax: 1-508-650-9525