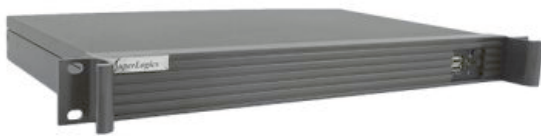


1U Rack Mount Industrial PC Rackmount

Configuration Number: BASE CONFIG
SL-1U-LLH610I-GC



Type:

- 1U Rack Mount Industrial PC
- Depth: 11", Max Card Depth: 6.5 inches"

Motherboard:

- Featuring Intel H610 Chipset and 12th Gen Core, Pentium Gold and Celeron (LGA1700) processor
- **Long Production Cycle Motherboard (Through Q2 2030)**
- **LAN:** 2x Ports (1GbE + 1GbE)
- **Video:** DisplayPort + HDMI + HDMI
- **Audio:** Realtek ALC897
- **Ports:**
 - 2x USB 2.0 Ports (2 Front)
 - 4x USB 3.2 Gen 1 Ports (4 Rear)
 - 2x COM Port (RS232/422/485 Rear)

See specifications for more ports
- **Operating Temperature:** 0°C to 60°C (32°F to 140°F)

Configuration summary:

- **Processor:** G7400- 3.70GHz Intel Pentium Gold CPU - Dual Core, 6MB Cache, UHD Graphics 710 (Base 46W) (ERM)
- **Memory:** 8GB DDR4 3200MHz SODIMM RAM
- **Hard Drive:** 250GB NVMe SSD M.2 2.9GB/1.3GB - Samsung 980
- **Power Supply:** 220W Flex ATX Power Supply - 115/230VAC Auto switching
- **Operating System:** Not Included -
- **Warranty:** One-Year Depot Warranty

Technical Specifications

MotherBoard Specifications:

Motherboard Model

- Motherboard Type: MiniITX
- Long Production Cycle
- Long Life: YES
- EOL Date: Q2 2030

Supported CPU

- Number of Processors: 1
- Processor Type: 12th Gen Core, Pentium Gold and Celeron (LGA1700)

Chipset

- Chipset: Intel H610 Chipset

Memory

- Memory Type: SO DIMM DDR4 2400MHz
- Memory Type: Non-ECC
- DIMMS: 2
- Maximum Memory: 64GB

On Board Audio

- Audio Type: Realtek ALC897

On Board Video

- Video Chipset: Supported by CPU - depends on CPU selected
- Video on IO: DisplayPort + HDMI + HDMI
- Display Port Out: 1
- HDMI Out: 2

LAN

- LAN Ports: 2
- LAN Type: 1GbE + 1GbE
- LAN Chipset: Intel i219V
- Second LAN Chipset: Intel i210AT
- Wireless LAN: No Integrated WLAN

Drive Interface

- SATA III Ports (6GB): 3

M.2 Slot Specs

- Total M.2 NVMe SSD Slots: 1
- M.2 Slot #1 Specs
- M.2 SATA SSD
- PCIe Signal
- 2242 - 22 mm x 42 mm.

Chassis Specifications:

General

- Form Factor: 1U Rackmount
- Color: Black
- Material: Metal/Steel
- Material Thickness: 1mm
- Motherboard Compatibility: Mini ITX
- Slide Rails: Optional

Expansion

- Full Height Slots: 1
- Max Card Depth: 6.5 inches"
- Internal 2.5" Bays: 2

Front Ports

- USB 2.0 Ports (Front): 2

Cooling System

- Maximum Fan Count: 2
- Included Fans: 2

Physical

- Depth: 11"
- Depth (Inches): 11
- Width: 19.10"
- Height: 1.75"
- Shipping Box - Depth: 22"
- Shipping Box - Width: 15"
- Shipping Box - Height: 5"
- Shipping Weight: 15lbs

Other Features

- Chassis Warranty: 1 Year

- 2260 - 22 mm x 60 mm.
- 2280 - 22 mm x 80 mm.

Rear IO

- USB 3.2 Gen 1 Type A Ports (on IO): 4
- Serial 232/422/485 Ports: 2
- Audio on IO

Headers

- USB 2.0 Ports (on Headers): 2
- FAN Connectors: 2
- Audio on Headers
- LVDS
- Chassis Intrusion
- TPM Support: Via 2.0 Header

Environmental

- Operating Temperature: 0°C to 60°C (32°F to 140°F)
- High Humidity: 95%
- Low Humidity: 10%

Operating System Support

- Windows 10 Home (64 Bit)
- Windows 10 Pro (64-Bit)
- SL-Windows 11PRO to 10PRO 64bit
- Windows 10 IoT 2021 LTSC Value
- Windows 10 IoT 2021 LTSC High End
- Windows 11 Home (64 Bit)
- Windows 11 Pro (64 Bit)
- Windows 11 IoT 2024 LTSC Value
- Windows 11 IoT 2024 LTSC High End
- LINUX Ubuntu Desktop

Compliance of Component

- CE
- FCC

Other Features

- Features:

1x PCIe 4.0 x16 slot

1x M.2 Socket 3 with key M, type
2242/2260/2280 (SATA/PCIe x4 mode)

1x M.2 Socket 1 with Key E, type 2230 for WIFI/BT
device (PCIe & CNVi)

* Access to PCI Express slot requires expansion
slot and a riser in some chassis models. Please
check Chassis Specification section for more
information.

If you have any questions, please discuss with our
Sales Engineers

- Motherboard Warranty: 1 Year



www.superlogics.com
Phone: 1-508-650-9500

sales@superlogics.com
Fax: 1-508-650-9525