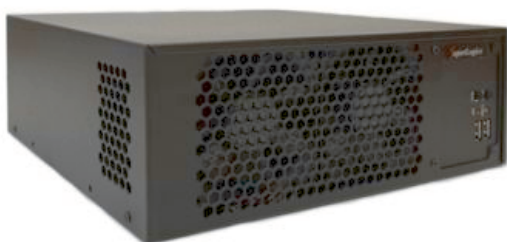


Microbox PC Embedded PC

Configuration Number: BASE CONFIG
SL-EB-Z790A-S15



Type:

- Microbox PC
- Dimension: 9.45" x 10.35" x 3.74"

Motherboard:

- Featuring Intel Z790 Chipset and 13th & 12th Gen Intel Core™, Pentium Gold and Celeron processor
- **Full Height Slots:**
 - 1 - PCIe x16
- **LAN:** 2x Ports (2.5GbE + 1GbE)
- **WiFi:** Wi-Fi 6E + BT
- **RAID:** NVMe 0,1,5
- **Video:** DisplayPort + HDMI
- **Audio:** 7.1 CH HD Audio (Realtek ALC897 Audio Codec)
- **Ports:**
 - 3x USB 2.0 Ports (2 Front, 1 Rear)
 - 2x USB 3.2 Gen 1 Ports (2 Internal Headers)
 - 4x USB 3.2 Gen 2 Ports (4 Rear)
 - 1x USB 3.2 Gen 2 Type-C Port (1 Internal Headers)

See specifications for more ports
- **Operating Temperature:** 5°C to 50°C (41°F to 122°F)

Configuration summary:

- **Processor:** G7400- 3.70GHz Intel Pentium Gold CPU - Dual Core, 6MB Cache, UHD Graphics 710 (Base 46W) (ERM)
- **Memory:** 8GB DDR5 4800MHz RAM Non-ECC Unbuffered DIMM
- **Hard Drive:** 250GB NVMe SSD M.2 2.9GB/1.3GB - Samsung 980

- **Power Supply:** 220W Flex ATX Power Supply - 115/230VAC Auto switching
- **Operating System:** Not Included -
- **Warranty:** One-Year Depot Warranty

Technical Specifications

MotherBoard Specifications:

Motherboard Model

- Motherboard Type: MiniITX

Supported CPU

- Number of Processors: 1
- Processor Type: 13th & 12th Gen Intel Core™, Pentium Gold and Celeron

Chipset

- Chipset: Intel Z790 Chipset

Memory

- Memory Type: DDR5 4800MHz
- Memory Type: Non-ECC
- DIMMS: 2
- Maximum Memory: 64GB

On Board Audio

- Audio Type: 7.1 CH HD Audio (Realtek ALC897 Audio Codec)

On Board Video

- Video Chipset: Supported by CPU - depends on CPU selected
- Video on IO: DisplayPort + HDMI
- Display Port Out: 1
- Embedded DisplayPort Out: 1
- HDMI Out: 1

LAN

- LAN Ports: 2
- LAN Type: 2.5GbE + 1GbE
- LAN Chipset: Intel i226-V 2.5GbE Ethernet
- Second LAN Chipset: Intel i219V
- Wireless LAN: Wi-Fi 6E + BT

Drive Interface

- SATA III Ports (6GB): 4
- RAID
- RAID Type: Software RAID

Chassis Specifications:

General

- Form Factor: Embedded PC
- Color: Black
- Material: Metal/Steel
- Material Thickness: 1mm
- Motherboard Compatibility: Mini ITX

Expansion

- Full Height Slots: 1
- Low Profile Slots: 2

Front Ports

- USB 2.0 Ports (Front): 2

Cooling System

- Maximum Fan Count: 2
- Included Fans: 2

Physical

- Depth: 9.45"
- Depth (Inches): 9.45
- Width: 10.35"
- Height: 3.74"
- Shipping Box - Depth:
- Shipping Box - Width:
- Shipping Box - Height:
- Shipping Weight:

Other Features

- Chassis Warranty: 1 Year

- RAID Levels Supported on Motherboard: 0, 1, 5, 10

Expansion Slots

- PCI Express x16 Slots On Motherboard: 1

M.2 Slot Specs

- Total M.2 NVMe SSD Slots: 2
- M.2 Slot #1 Specs
 - PCIe Signal
 - 2280 - 22 mm x 80 mm.
- M.2 Slot #2 Specs
 - M.2 SATA SSD
 - PCIe Signal
 - 2280 - 22 mm x 80 mm.

Rear IO

- USB 2.0 Ports (on IO): 1
- USB 3.2 Gen 2 Type A Ports (on IO): 4
- USB 3.2 Gen 2x2 Type C Ports (on I/O): 1
- Audio on IO

Headers

- USB 2.0 Ports (on Headers): 2
- USB 3.2 Gen 1 Ports (on Headers): 2
- USB 3.2 Gen 2 Type-C (on Headers): 1
- FAN Connectors: 3
- Audio on Headers

Environmental

- Operating Temperature: 5°C to 50°C (41°F to 122°F)
- High Humidity: 90%
- Low Humidity: 5%

Operating System Support

- Windows 10 Home (64 Bit)
- Windows 10 Pro (64-Bit)
- SL-Windows 11PRO to 10PRO 64bit
- Windows 10 IoT 2021 LTSC Value
- Windows 10 IoT 2021 LTSC High End
- Windows 11 Home (64 Bit)
- Windows 11 Pro (64 Bit)
- Windows 11 IoT 2024 LTSC Value
- Windows 11 IoT 2024 LTSC High End
- LINUX Ubuntu Desktop

Compliance of Component

- CE
- FCC

Other Features

- Features:
 - Storage

CPU:

- 1 x Hyper M.2 Socket (M2_1, Key M), supports type 2280 PCIe Gen4x4 (64 Gb/s) mode*

Chipset:

- 1 x Hyper M.2 Socket (M2_2, Key M), supports type 2280 SATA3 6.0 Gb/s & PCIe Gen4x4 (64 Gb/s) modes*

- 4 x SATA3 6.0 Gb/s Connectors

*Supports Intel Volume

Management Device

(VMD)

Supports NVMe SSD as

boot disks

RAID

- Supports RAID 0, RAID 1, RAID 5 and RAID 10 for SATA storage devices
- Supports RAID 0, RAID 1 and RAID 5 for M.2 NVMe storage devices*

* Requires additional M.2 NVMe expansion cards to support RAID 5

Slots

CPU:

- 1 x PCIe 5.0 x16 Slot (PCIe1), supports x16 mode*

Chipset:

- 1 x Vertical M.2 Socket (Key E), supports type 2230 WiFi/BT PCIe WiFi module and Intel CNVio/CNVio2 (Integrated WiFi/BT)

*Supports

PCIe riser

cards to

extend one

x16 slot to

two x8 slots

Supports

NVMe SSD

as boot

disks

* Access to

PCI Express

slot requires expansion slot and a riser in some chassis models. Please check Chassis Specification section for more information.

If you have any questions, please discuss with our Sales Engineers.

- Motherboard Warranty: 1 Year



Simplifying Computing™

www.superlogics.com
Phone: 1-508-650-9500

sales@superlogics.com
Fax: 1-508-650-9525