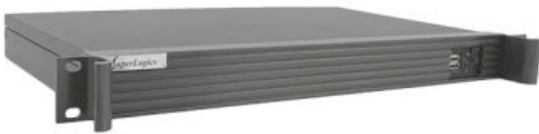


1U Rack Mount Industrial PC Rackmount

Configuration Number: BASE CONFIG
SL-1U-LLN100EM-GC



Type:

- 1U Rack Mount Industrial PC
- Depth: 11", Max Card Depth: 6.5 inches"

Motherboard:

- Featuring Intel Celeron SoC and Intel Quad-core Processor N100 (up to 3.4 GHz)
- **Long Production Cycle Motherboard (Through Q1 2026)**
- **LAN:** 2x Ports (1GbE + 1GbE)
- **Video:** VGA + HDMI
- **Audio:** Realtek ALC897
- **Ports:**
 - 3x USB 2.0 Ports (1 Front, 2 Rear)
 - 4x USB 3.2 Gen 1 Ports (2 Rear, 2 Internal Headers)
 - 6x COM Ports (2 RS232 Rear, 3 RS232 Internal Headers, 1 RS232/422/485 Rear)

See specifications for more ports
- **Operating Temperature:** 0°C to 60°C (32°F to 140°F)

Configuration summary:

- **Memory:** 8GB DDR4 3200MHz SODIMM RAM
- **Hard Drive:** 500GB M.2 2280 NVMe SSD or greater
- **Operating System:** Not Included -
- **Warranty:** One-Year Depot Warranty

Technical Specifications

MotherBoard Specifications:

Motherboard Model

- Motherboard Type: MiniITX
- Fanless
- Long Production Cycle
- Long Life: YES
- EOL Date: Q1 2026

Supported CPU

- Number of Processors: 1
- Processor Type: Embedded CPUs (ultra-low power, soldered down)
- Embedded CPU: Intel Quad-core Processor N100 (up to 3.4 GHz)

Chipset

- Chipset: Intel Celeron SoC

Memory

- Memory Type: DDR4 3200MHz
- Memory Type: Non-ECC
- DIMMS: 1
- Maximum Memory: 16GB

On Board Audio

- Audio Type: Realtek ALC897

On Board Video

- Video Chipset: Supported by CPU - see Embedded CPU Information
- Video on IO: VGA + HDMI
- VGA Port Out: 1
- HDMI Out: 1

LAN

- LAN Ports: 2
- LAN Type: 1GbE + 1GbE
- LAN Chipset: Realtek RTL8111H
- Second LAN Chipset: Realtek RTL8111H
- Wireless LAN: No Integrated WLAN

Drive Interface

- SATA III Ports (6GB): 2

M.2 Slot Specs

- Total M.2 NVMe SSD Slots: 1
- M.2 Slot #1 Specs
- PCIe Signal

Chassis Specifications:

General

- Form Factor: 1U Rackmount
- Color: Black
- Material: Metal/Steel
- Material Thickness: 1mm
- Motherboard Compatibility: Mini ITX
- Slide Rails: Optional

Expansion

- Full Height Slots: 1
- Max Card Depth: 6.5 inches"
- Internal 2.5" Bays: 2

Front Ports

- USB 2.0 Ports (Front): 2

Cooling System

- Maximum Fan Count: 2
- Included Fans: 2

Physical

- Depth: 11"
- Depth (Inches): 11
- Width: 19.10"
- Height: 1.75"
- Shipping Box - Depth: 22"
- Shipping Box - Width: 15"
- Shipping Box - Height: 5"
- Shipping Weight: 15lbs

Other Features

- Chassis Warranty: 1 Year

- 2242 - 22 mm x 42 mm.
- 2260 - 22 mm x 60 mm.
- 2280 - 22 mm x 80 mm.
- M.2 E-Key Slot
- PCIe Signal
- USB
- 2230 - 22 mm x 30 mm.

Rear IO

- USB 2.0 Ports (on IO): 2
- USB 3.2 Gen 1 Type A Ports (on IO): 2
- Serial (Rear IO): 2
- Serial 232/422/485 Ports: 1
- Audio on IO

Headers

- USB 2.0 Ports (on Headers): 1
- USB 3.2 Gen 1 Ports (on Headers): 2
- Serial (via Headers): 3
- FAN Connectors: 1
- LVDS
- Chassis Intrusion
- TPM Support: Via 2.0 Header
- DC Power: 12V DC-in

Environmental

- Operating Temperature: 0°C to 60°C (32°F to 140°F)
- High Humidity: 95%
- Low Humidity: 10%

Operating System Support

- Windows 10 Home (64 Bit)
- Windows 10 Pro (64-Bit)
- SL-Windows 11PRO to 10PRO 64bit
- Windows 10 IoT 2021 LTSC Entry
- Windows 11 Home (64 Bit)
- Windows 11 Pro (64 Bit)
- Windows 11 IoT 2024 LTSC Entry
- LINUX Ubuntu Desktop

Compliance of Component

- FCC

Other Features

- Features:

Expansion slots

1x PCI Express 3.0/2.0 x1 slot (x1 mode)

1x M.2 Socket 1 with E key, type 2230 for WIFI/BT device (PCIe x1 /USB2.0)

1x M.2 Socket 3 with M key, type 2242/ 2260/

2280 (SATA/PClex1)

- Motherboard Warranty: 1 Year



www.superlogics.com
Phone: 1-508-650-9500

sales@superlogics.com
Fax: 1-508-650-9525